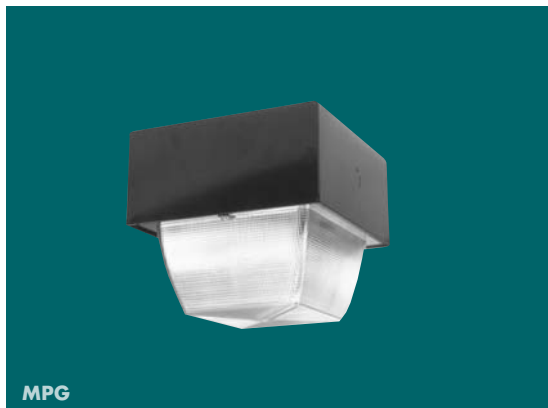


# Accupark™ Parking Garage Luminaire



## MPG

### Rugged Steel Construction

#### Optics

- Designed for vertical, base up lamps. Prismatic U.V. stabilized polycarbonate with low brightness and even light characteristics. Anodized aluminum reflector.

#### Housing

- High strength steel housing. Gasketed lens.

#### Mounting

- Knockouts for ceiling and side entry.

#### Finish

- Bronze polyester powder coat finish.

#### Socket

- Specification grade porcelain lampholder.

#### Ballasts

- HPF ballasts are suitable for low temperature starting. MH-30°C, HPS -40°C

Lamp Watts	Lamp Base	Ballast	Ceiling Mount Catalog Number
<b>Metal Halide</b>			

With Vertical Lamp

50	Medium	120	<b>MPG50MH-120</b>
70	"	"	<b>MPG70MH-120</b>
100	"	"	<b>MPG100MH-120</b>

#### High Pressure Sodium

With Vertical Lamp

35	Medium	120NPF	<b>MPG35HP-120NP</b>
50	"	"	<b>MPG50HP-120NP</b>
70	"	"	<b>MPG70HP-120NP</b>
100	"	"	<b>MPG100HP-120NP</b>
150	"	"	<b>MPG150HP-120NP</b>

#### Select Voltage Suffix:

35-150W HPS	Reactor NPF	See Above	120V Only
	Reactor HPF	<b>"-120R"</b>	120V Only
50-100W MH	50-100W	See Above	120V Only

### Options

Description	Suffix
<b>Lamp</b> With clear lamp	- L
<b>Tamper Proof</b>	- TP
<b>Color</b> With clear lamp	Bronze - Standard
	White - <b>WH</b>
	Black - <b>BL</b>

### Dimensions

#### MPG

