

RECESSED LINEAR LOUVERED TROFFER FOR T-GRID CEILING

HAL

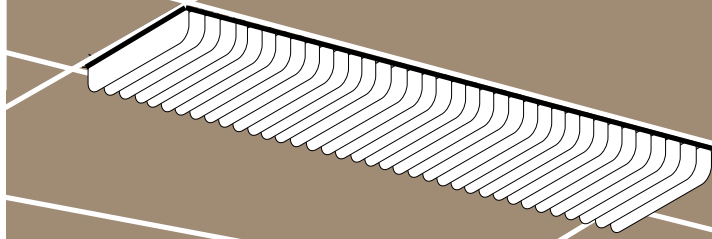
Fluorescent luminaires, lay-in type for inverted T-grid ceiling.

Effective linear lighting for corridors or other applications.

Suitable for continuous row or individual installation.

Wide beam spread parallel to lamps, with 45° longitudinal cut-off.

Steel housing and louver, baked white polyester finish.



27

1' x 4'

T-GRID CEILING

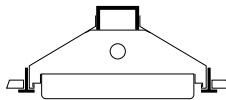
LAMPS

LENGTH

CAT. NO.

VOLTS*

BALLAST*



1-25 W/T8

36"

HAL-14G-125-

120

ES

1-30 W/T12

36"

HAL-14G-130-

120

ES

1-32 W/T8

48"

HAL-14G-132-

120

ES

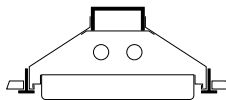
1-40 W/T12

48"

HAL-14G-140-

120

ES



2-25 W/T8

36"

HAL-14G-225-

120

ES

2-30 W/T12

36"

HAL-14G-230-

120

ES

2-32 W/T8

48"

HAL-14G-232-

120

ES

2-40 W/T12

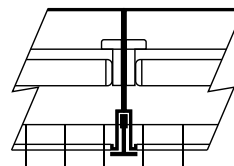
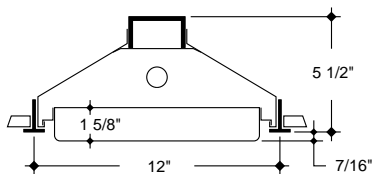
48"

HAL-14G-240-

120

ES

DETAIL AT T-BAR CROSSING



Steel louver blade - white finish,
1 1/2" spacing maintained in
continuous row installation.

* For other volts and ballast selection = SEE PAGE 34
ORDERING EX: CAT. NO. = HAL-14G-240-120-ES