

RECESSED LINEAR OPEN TROFFER FOR LAY-IN T-GRID CEILING

RSL

Commercial linear open downlight troffer for inverted T-grid ceiling system.

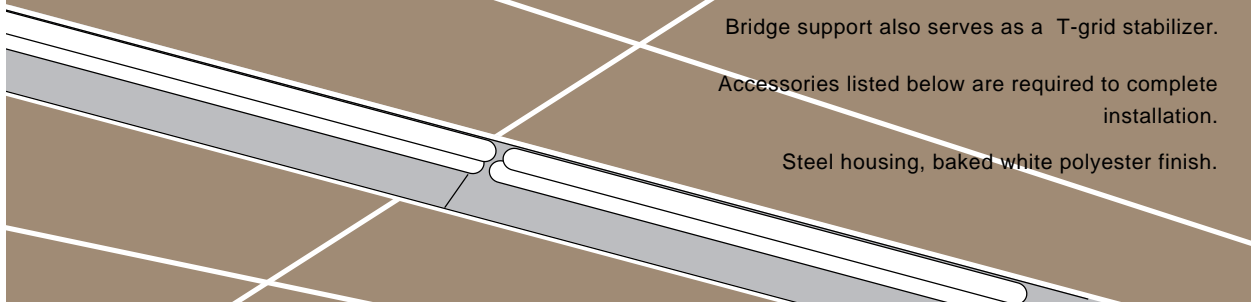
Conceived for continuous row installation in a commercial environment.

Provision provided for suspension independent of ceiling grid.

Bridge support also serves as a T-grid stabilizer.

Accessories listed below are required to complete installation.

Steel housing, baked white polyester finish.



28

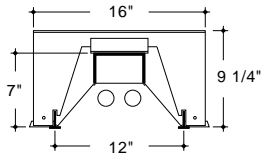
T-GRID CEILING

LAMPS

LENGTH

CAT. NO.

VOLTS* BALLAST*



2-40 W/T12/RS

48"

RSL-14G-240-

120

ES

2-60 W/T12/HO

48"

RSL-14G-260-

120

STD

2-75 W/T12/SL

96"

RSL-18G-275-

120

ES

2-110 W/T12/HO

96"

RSL-18G-2110-

120

ES

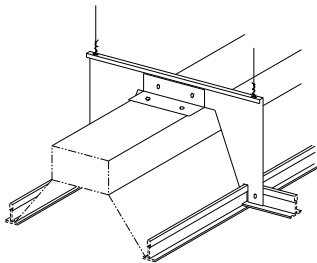
ACCESSORIES

CAT. NO. = RSL-B

Mounting bridge for fixture suspension.

For continuous row installation:

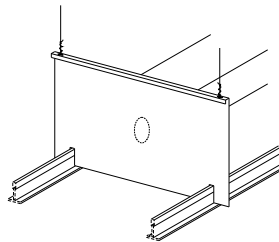
- (1) required / 4' section.
- (2) required / 8' section.



CAT. NO. = RSL-D

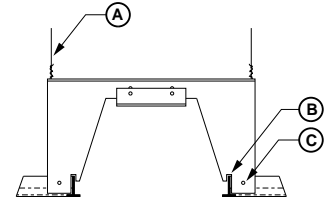
End plate for end of row installation.

- (2) required / row or per individual installation.



METHOD OF INSTALLATION

Mounting bridge joins (2) troffers in continuous row installation.



- A - Independent suspension
- B - Alignment slot for main "T"-bar
- C - Hole provided for securing cross "T" runner

CONVENIENCE FEATURE:

BALLAST ACCESSIBLE FROM THE ROOM SIDE FOR EASY SERVICING.

* For other volts and ballast selection = SEE PAGE 34

ORDERING EX: **CAT. NO. =RSL-14G-240-120-ES**