

Smart EV Charging Solutions



As more drivers go electric, smart EV charging stations are becoming a must-have amenity. Enel X's fully-networked, grid-responsive charging stations maximize your EV infrastructure investment and provide access to best-in-class smart charging with our powerful JuiceNet software. Designed for durability, safety and efficiency, charging is made easy, reliable and cost-effective.

As a subsidiary of the Enel Group, one of the world's largest providers in renewable energy, Enel X e-Mobility designs and manufactures products with smart charging as a first principle. Enel X delivers standalone smart EV charging as well as bundled service offerings that include energy storage, solar, demand response, and energy insights.

- Trusted and established JuiceBox brand, with newly refreshed product line-up
- Compatible with all electric vehicles
- Faster charging speed options (ready for future EV models)
- Advanced smart charging and energy optimization capabilities to reduce electricity costs and minimize demand charges
- Best-in-class EV charging stations at affordable prices
- 3-year commercial warranty, with 2-year extension option
- Qualified for EVSE Incentives

High-quality, reliable smart EV charging for every application

JuiceBox
Residential
Level 2 EVSE



JuiceBox Pro
Commercial
Level 2 EVSE



JuiceStand Pro
Commercial
Level 2 EVSE



JuicePedestal
Commercial
Level 2 EVSE



JuicePump 50kW
Commercial
DC Fast Charging



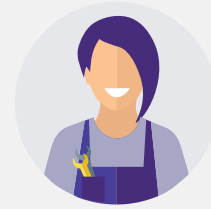
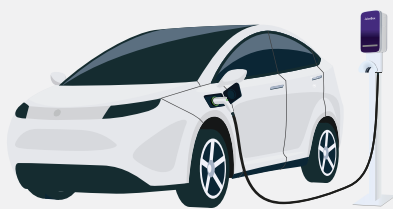
JuicePump 150kW
Commercial
DC Fast Charging



JuicePump 175kW
Commercial
DC Fast Charging



A Turnkey Model: Infrastructure + Software + Services



Unique to Enel X

JuiceEco

JuiceEco matches electricity consumption from EV charging with Renewable Energy Certificates to help EV drivers reduce their carbon footprint.

JuiceNet Green

JuiceNet Green helps drivers charge cleaner by optimizing charging to coincide with the times when solar and wind power are at maximum production.

JuiceNet IoT Software

JuiceNet is a cloud-based IoT platform for EV load management, configuration, optimization, visibility and reporting.

JuicePoints

JuicePoints enables EV drivers to earn cash for contributing to a more reliable grid.





Residential Level 2 EV Charging

"My utility gave me \$450 off the price of an Enel X JuiceBox 40 smart EV charging station for agreeing to charge my Tesla Model 3 during off-peak hours. The JuiceBox is simple, easy to use and doesn't take up too much space in my garage."

TRAVIS J
ENEL X JUICEBOX CUSTOMER

JuiceBox 32, 40, & 48

Drivers can charge their EVs faster, cleaner and smarter at home

JuiceBox 40, our best-selling smart EV charging station, combines speed and performance with great value. Enjoyed by thousands of satisfied EV drivers, it delivers all the safety and smart charging features you need to make home charging easy, reliable and cost-effective.



Best market value to price ratio

Best in class performance for a great value.



Leadership position

Largest residential install base in US (74,000+).



IoT software solutions leader

GuideHouse ranked Enel X as #1 Vehicle Grid Integration solution.



Smart charging features

Mobile app & dashboards include notifications, load balancing, optimized charging schedules, and energy service programs that create shared value for drivers, businesses, grid operators & more.

Why JuiceBox?

Up to 7X Faster Charging

Spend less time waiting for your EV to charge so you can get to your destination on time.

Powered by JuiceNet

Monitor and schedule charging with this intuitive mobile app and dashboard.

Easy to Use and Install

Small, lightweight enclosure; lockable quick-release mount; weatherproof for indoor/outdoor application.

Universal Compatibility

SA-J1772™ plug ensures compatibility with all EVs.*

Cleaner Driving

Optimize charging times and participate in smart grid programs to reduce emissions; Energy Star® -certified.

See Charging Status

Dynamic LED lights display WiFi connectivity and charging behavior.

JuiceBox® 40 Specifications

Electrical Characteristics	<ul style="list-style-type: none"> › Safety Rated: 40A Max › Single phase input: nominal voltage 208-240 VAC ~60 Hz › Power: 8.3 kW at 208 VAC; 9.6 kW at 240 VAC 	6.8"/17.3 cm	18.5"/47 cm				
Input Cable & Plug	<ul style="list-style-type: none"> › 2 ft/0.6 m with NEMA 14-50 plug › 2.5 ft/0.8 m hardwire pigtail 						
Output Cable & Connector	<ul style="list-style-type: none"> › 25 ft/7.6 m cable › J1772 standard compliant 						
EV JuiceNet® App	<ul style="list-style-type: none"> › Precision measurement of power, energy, voltage & current › Automated notifications: time-of-use in effect, start of charge, end of charge, unit offline, unit back online, car not plugged in by a set time › Web-based portal for desktop access › See EV JuiceNet app data sheet for more on convenient features 						
Smart Grid Connectivity	<ul style="list-style-type: none"> › Built-in WiFi connectivity (802.11 b/g/n 2.4 GHz) 						
Firmware	<ul style="list-style-type: none"> › End-to-end AES-256-based encrypted protocols › 90-day, 15-minute interval data storage › Over-the-air (OTA) upgradeable firmware › Persistent data storage upon power interruption 						
Emissions Reduction	<ul style="list-style-type: none"> › Available via optional JuiceNet Green software upgrade 						
Enclosure	<ul style="list-style-type: none"> › Dynamic LED lights show charging status: network connectivity, charging in progress, delaying charging, standby, charge complete/EV not drawing power › Weatherproof, dust-tight, polycarbonate enclosure: IP66 › Quick-release wall mounting bracket included › Built-in security lock and integrated cable management › Operating Temperature: -40°F to 140°F (-40°C to 60°C) 						
Weight & Dimensions	<ul style="list-style-type: none"> › Main enclosure: H: 18.5 in/469 mm x W: 6.8 in/173 mm x D: 5.8 in/147 mm › 15 lbs/6.8 kg 						
Codes & Standards	<ul style="list-style-type: none"> › FCC Part 15 Class B, NEC 625 compliant, ENERGY STAR® › OpenADR 2.0b compliant 						
Safety	<ul style="list-style-type: none"> › UL and cUL Listed 						
Warranty	<ul style="list-style-type: none"> › 3-year limited product warranty (parts only) for use under normal residential operating conditions 						
Made in North America	<ul style="list-style-type: none"> › From domestic & imported parts 						

JUICEBOX and JUICENET are registered trademarks of Enel X North America, an Enel Group company. Other product and company names mentioned herein may be trademarks or trade names of their respective owners.



Commercial Level 2 EV Charging

"The JuiceBox EV charging stations installed at our commercial properties have been well received, and are a great step towards delivering on our commitment to optimizing resources throughout our portfolio."

MANAGING DIRECTOR
U.S. DEVELOPMENT & CONSTRUCTION
AT KENNEDY WILSON

JuiceBox Pro 32, 40, & 48

Enable customers, employees and tenants to charge up on-the-go

JuiceBox Pro is a Level 2 charging station with all the safety and charging features that cost-conscious businesses and organizations need to maximize their EVSE investments.



Powerful charging

High output from 32A up to 48A can charge up to 13X faster than Level 1 stations.



Versatility to fit your needs

Versatile use cases including fleet charging, customer parking, multifamily residences, and service bays.



Smart charging features

Mobile app & dashboards include notifications, load balancing, and optimized charging schedules. Smart Level 2 charging stations are eligible for significant rebates and incentive programs.

Why JuiceBox Pro?

Great Performance & Value

Best-in-class smart charging station at an affordable price.

Powered by JuiceNet

Intuitive mobile app for drivers and powerful online dashboard for system administrators.

Smart Grid Connected

Optimize charging times and aggregate stations to reduce energy costs.

Universal Compatibility

SA-J1772™ plug ensures compatibility with all EVs.*

Access Control & Payment

With JuiceNet Enterprise, you can allow registered drivers to access & pay for charging via a mobile app.

Compact & Easy to Use

Small enclosure, weatherproof for indoor/outdoor installation, LED charging status indicators.

*Tesla requires CHAdeMO adapter, an easy and affordable add-on available from Enel X.

JuiceBox® Pro 40 Specifications

Electrical Characteristics	<ul style="list-style-type: none"> > Safety Rated: 40A Max > Single phase input: nominal voltage 208-240 VAC ~60 Hz > Power: 8.3 kW at 208 VAC; 9.6 kW at 240 VAC 	6.8"/17.3 cm	18.5"/47 cm					
Input Cable & Plug	<ul style="list-style-type: none"> > 2 ft/0.6 m with NEMA 14-50 plug > 2.5 ft/0.8 m hardwire pigtail 							
Output Cable & Connector	<ul style="list-style-type: none"> > 25 ft/7.6 m cable > J1772 standard compliant 							
JuiceNet® Smart Charging Platform	<ul style="list-style-type: none"> > Precision measurement of power, energy, voltage & current > Web-based portal: set payment rates and charging hours; monitor charging status and consumption data for individual or groups of devices; control station access; manage EV load > Driver app to monitor and pay for charging (iOS & Android) > Refer to the JuiceNet Business and JuiceNet Enterprise data sheets for more on the capabilities of each dashboard 							
Connectivity & Authentication	<ul style="list-style-type: none"> > WiFi-enabled: 802.11 b/g/n 2.4 GHz > Integrated Cellular: LTE (optional) > JuiceRouter: Connect up to 16 chargers with WiFi-to-LTE router (optional) > RFID enabled and QR Code authenticated with JuicePass Enterprise Mobile App 							
Firmware	<ul style="list-style-type: none"> > End-to-end AES-256-based encrypted protocols > 90-day, 15-minute interval data storage > Over-the-air (OTA) upgradeable firmware > Persistent data storage upon power interruption 							
Enclosure	<ul style="list-style-type: none"> > Dynamic LED lights show charging status: network connectivity, charging in progress, delayed charging, standby, charge complete/EV not drawing power > Weatherproof, dust-tight, polycarbonate enclosure: IP66 > Quick-release wall mounting bracket included > Built-in security lock and integrated cable management > Operating Temperature: -40°F to 140°F (-40°C to 60°C) 							
Weight & Dimensions	<ul style="list-style-type: none"> > Main enclosure: H: 18.5 in/469 mm x W: 6.8 in/173 mm x D: 5.8 in/147 mm > 15 lbs/6.8 kg 							
Codes & Standards	<ul style="list-style-type: none"> > FCC Part 15 Class B, NEC 625 compliant, ENERGY STAR® > ISO 15118 support (optional) 							
Safety	<ul style="list-style-type: none"> > UL and cUL Listed 							
Warranty	<ul style="list-style-type: none"> > 3-year limited parts warranty for commercial use. 2-year warranty extension available 							
Made in North America	<ul style="list-style-type: none"> > From domestic & imported parts 							

JUICEBOX and JUICENET are registered trademarks of Enel X North America, an Enel Group company. Other product and company names mentioned herein may be trademarks or trade names of their respective owners.

JuiceStand Pro

Install a flexible and compact EV charging station with dual-port option

Durable and affordable, JuiceStand Pro is the perfect solution for multi-unit dwellings, workplaces and small businesses with light to medium EV traffic. JuiceStand Pro's small footprint is ideally suited for locations with limited parking space and can include one or two UL Listed JuiceBox Pro units, which are compatible with all electric vehicles.



Flexible Design & Power

Mounts one or two JuiceBox Pro back-to-back charging stations in combinations of 32 amp, 40 amp, and 48 amp outputs.



Easy Installation

Save on installation with a cost-effective ground-mounted charging station.



Industrial Design

Robust steel-construction stand is designed for durability in all-weather conditions.

Why JuiceStandPro?

Great Performance & Value

Best-in-class smart charging station at an affordable price.

Powered by JuiceNet

Intuitive mobile app for drivers and powerful online dashboard for system administrators.

Future-proofed Design

Made in the USA with industrial-strength construction and guaranteed lasting quality.

Universal Compatibility

SA-J1772™ plug ensures compatibility with all EVs.*

Access Control & Payment

With JuiceNet Enterprise, you can allow registered drivers to access & pay for charging via a mobile app.

Compact & Easy to Use

Small enclosure, weatherproof for indoor/outdoor installation, LED charging status indicators.

*Tesla requires CHAdeMO adapter, an easy and affordable add-on available from Enel X.

3.5" (8.9 cm)
x 6" (15.2 cm)

JuiceStand Pro Specifications

- Easy and Durable Mounting Solution**
- › Easy and cost-effective installation: ground-mounted with 4 bolts, concrete pad recommended
 - › Steel construction: .08 in (.2 cm) thick steel to withstand weather and impact

- Weight & Dimensions**
- › Height: 59.3 in (150.6 cm)
 - › Width: 3.5 in. (8.9 cm) by 6 in (15.2 cm deep)
 - › Base: 12 in. (30.4 cm) x 12 in. (30.4 cm)
 - › Weight: 80 lbs (37.3 kg) - add 15 lbs (6.8 kg) per JuiceBox

JuiceBox Pro Charging stations

- JuiceBox Pro Chargers**
- › Choose to include single or dual JuiceBox Pro charging stations on your JuiceStand
 - › Dynamic LED lights show charging status: network connectivity, charging in progress, delaying charging, standby
 - › Charging stations secured with four security screws
 - › Operating Temperature: -40°F to 140°F (-40°C to 60°C)

- Electrical Characteristics**
- › Choose between 4 power configurations: 32a, 7.7kW; 40a 9.6kW and 48a 11.5kW Single phase input: nominal voltage 208/240 VAC

- Input Cable & Plug**
- › UL-rated hardwire conduit & wiring

- Output Cable & Connector**
- › 25 ft cable (7.6m)
 - › J1772 standard compliant

- JuiceNet Smart Charging Platform**
- › Web-based portals: set rates and charging hours; monitor charging status and consumption data; control station access; EV load management
 - › Precision measurement of power, energy, voltage & current
 - › Driver app to monitor and pay for charging (iOS & Android)
 - › JuiceNet Enterprise offers enhanced payment options, advanced user groups and access control, and multi-property EVSE management
 - › Refer to the JuiceNet Business and JuiceNet Enterprise data sheets for more on the capabilities of each dashboard

- Connectivity**
- › WiFi: 802.11 b/g/n 2.4 GHz
 - › JuiceRouter: Connect up to 16 chargers with WiFi-to-LTE router (optional)
 - › Integrated Cellular: LTE (optional via JuiceBox Pro charging stations)
 - › Ethernet: 10/100BASE-TX with RJ-45 connector (optional)

- Firmware**
- › End-to-end AES-256-based encrypted protocols
 - › 90-day, 15-minute interval data storage
 - › Persistent data storage upon power interruption
 - › Over-the-air (OTA) upgradeable firmware

- Codes & Standards**
- › FCC Part 15 Class B, NEC 625 compliant, ENERGY STAR®†
 - › OCPP 1.6J and Open ADR2.0b compliant

- Safety**
- › UL and cUL Listed

- Warranty**
- › 3-year limited parts warranty for commercial use

- Made in USA**
- › From domestic & imported parts



59.3" (150.6 cm)

12" (30.4 cm)
x 12" (30.4 cm)

JuicePedestal

Offer all-purpose EV charging with dual-port mounting, cable management, and comprehensive payment options

JuicePedestal offers best-in-class smart charging for businesses, municipalities, property owners and fleet managers that want to offer EV charging to their employees, customers and tenants. UL Certified with universal EV compatibility, JuicePedestal is an all-purpose commercial charging station for EV drivers that offers flexible charging port configurations and multiple payment options.



Flexible Design & Power

Choose to include 1 or 2 JuiceBox charging stations



Easy Cable Management

Turn-key solution with built-in cable management and retractable cables.



Various payment options

Offer free charging or allow drivers to pay via mobile app. Available with or without UPT.

Why JuicePedestal?

Versatile Power Options

Choose between 32, 40 and 48 amp outputs to charge electric vehicles quickly and easily.

Flexible Payment

Allow drivers to access and pay via mobile device or optional credit card terminal.

Easy Cable Management

Turnkey solution with built-in cable management for plug and play deployment.

Universal Compatibility

SA-J1772™ plug ensures compatibility with all EVs.*

Industrial Design

Designed for durability in all weather conditions.

Smart Charging Platform

JuiceNet smart charging platform offers web-based portal to monitor usage and configure charging settings.

*Tesla requires CHAdeMO adapter, an easy and affordable add-on available from Enel X.

JuicePedestal Configurations

	JuicePedestal	JuicePedestal with Router	JuicePedestal with Universal Payment Terminal (UPT)	JuicePedestal with LTE
Assembly Options	Fully assembled with a choice of 4 power variants	Fully assembled with a choice of 4 JuiceBox power variants and JuiceRouter	Fully assembled with a choice of 4 JuiceBox power variants and UPT	Fully assembled with a choice of 4 JuiceBox power variants of LTE enabled JuiceBoxes
Network (Provider varies by geography)	Installation site Wi-Fi Network	LTE - Wi-Fi Network enabled *Router data plan required – ordered separately	LTE Network enabled *UPT Data plan required – ordered separately	*LTE data plan required – ordered separately
Connectivity	Cloud connection via customers' Wi-Fi network	Cloud connection via LTE Serves as a Wi-Fi access point for up to 7 JuicePedestal	Cloud connection via LTE	Cloud connection via LTE
Authentication and Payment	QR Code and RFID, optional upgrade to UPT If upgraded with UPT, WiFi connectivity is no longer required	QR Code and RFID, optional upgrade to UPT If upgraded, Router will be dismounted (connected stations will lose connectivity)	Credit Card Reader, QR Code and RFID	QR Code and RFID, optional upgrade to UPT If upgraded, LTE data plan will not be required and replaced by UPT data plan
Management Software	*JuiceNet Business or JuiceNet Enterprise	*JuiceNet Enterprise	*JuiceNet Enterprise	*JuiceNet Enterprise

*Annual subscription per device

JUICEBOX and JUICENET are registered trademarks of Enel X North America, an Enel Group company. Other product and company names mentioned herein may be trademarks or trade names of their respective owners.

JuicePedestal Specifications

Robust, Convenient Mounting Solution	<ul style="list-style-type: none"> › Ships fully assembled with two JuiceBox Pro chargers › Easy, quick installation: ground-mounted with 4 bolts, concrete pad recommended. › Cable management: retractable weight pulley cables system
Weight & Dimensions	<ul style="list-style-type: none"> › Height: 74 in/188 cm › Width: 19.88 in/50.50 cm by 8.00 in /20.32 cm deep › Weight: 175 lbs/79.38 kg (without charging units- add 15-17 lbs/6.80-7.71 kg per JuiceBox)
Safety and certifications	<ul style="list-style-type: none"> › UL, cUL and ENERGY STAR® compliant
Warranty	<ul style="list-style-type: none"> › 3-year limited warranty, optional 2 additional years
Made in North America	<ul style="list-style-type: none"> › From domestic & imported parts



JuiceBox Pro Charging Stations

Electrical Characteristics	<ul style="list-style-type: none"> › Choose between three power configurations: 32A, 7.7 kW; 40A, 9.6 kW and 48A, 11.2kW › Single phase input: nominal voltage 208-240 VAC ~60 Hz
Input Cables	<ul style="list-style-type: none"> › Internal junction box for two circuits to power chargers
Output Cable & Connector	<ul style="list-style-type: none"> › 20 ft/6.1m cables, each rated 240VAC with a J1772 Plug
JuiceNet(R) Smart Charging Platform	<ul style="list-style-type: none"> › Precision measurement of power, energy, voltage & current › Web-based portal: set payment rates and charging hours; monitor charging status and consumption data for individual or groups of devices; control station access; manage EV load › Driver app to monitor and pay for charging (iOS & Android) › Refer to the JuiceNet Business and JuiceNet Enterprise datasheets for more on the capabilities of each dashboard
Connectivity & Authentication	<ul style="list-style-type: none"> › WiFi: 802.11 b/g/n 2.4 GHz › JuiceRouter: Connect up to 16 chargers with WiFi with an LTE Router (optional) › Integrated Cellular: LTE (optional via JuiceBox charging stations) › RFID authentication enabled and QR Code payment option
Firmware	<ul style="list-style-type: none"> › End-to-end AES-256-based encrypted protocols › 90-day, 15-minute interval data storage › Persistent data storage upon power interruption › Over-the-air (OTA) upgradeable firmware
Enclosure	<ul style="list-style-type: none"> › Dynamic LED lights show charging status: network connectivity, charging in progress, delaying charging, standby, charge complete/EV not drawing power › IP66 Weatherproof, dust-tight, polycarbonate enclosure › IK10: resistant polycarbonate case › Quick-release wall mounting bracket included › Built-in security lock and integrated cable management › Operating Temperature: -40°F to 140°F (-40°C to 60°C) / -4°F to 140°F (-20°C to 50°C) with UPT
Codes & Standards	<ul style="list-style-type: none"> › FCC Part 15 Class B, NEC 625 compliant, ENERGY STAR®* › OCPP 1.6J and OpenADR 2.0b compliant

Refer to the JuiceBox Pro 32, 40, 48 and 80 datasheets for more information.



enel x
JuicePump

BRITE-LITE
LIGHTING AND ELECTRICAL DISTRIBUTORS

Commercial DC Fast Charging

"The Charge Your Ride Montana EV rebate covered the majority of the cost of Enel X's JuicePump 50 kW DC Fast Charging stations at two of our Taco Bell locations. We know that consumers are increasingly thinking about their environmental footprint, and we're proud to offer smart EV charging as an amenity to our customers to serve the growing demand for EV charging."

HANNAH SCANLON
TACO BELL
UNDER MONTANA BRANDS MANAGEMENT

JuicePump 50 kW

Charge electric vehicles faster with DC fast charging

The JuicePump 50 kW delivers easy to use fast charging with a compact installation footprint. This smart, networked DC fast charging station will charge an EV's battery up to 80% capacity in 30 to 60 minutes. It's ideal for dealerships, fleets, multifamily residences with shared parking, and parking garages, where installation space might be limited.



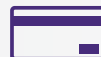
Compact Design

Fast charging in a lightweight, space-saving installation footprint



State-of-the-art liquid cooling

Operates smoothly in all weather conditions.



Various payment options

Offer free charging or allow drivers to pay via mobile app. Available with or without UPT.

Why JuicePump 50kW?

Faster Charging

Drivers can charge vehicles up to 80% within 30 minutes

Eligible for Incentives

Qualifies for most utility and state incentive programs, which may cover between 50% to 100% of project costs.

Easy to Use and Install

Save on upfront costs with compact and lightweight DCFC.

Universal Compatibility

SA-J1772™ plug ensures compatibility with all EVs.*

Public Charging Network

Join a fast-growing network serving thousands of EV drivers.

Smart Charging Platform

Use the JuiceNet software platform to restrict station access and collect payment.

*Tesla requires CHAdeMO adapter, an easy and affordable add-on available from Enel X.

JuicePump Specifications

Connectors	› CHaDeMO and CCS (Type 1)
Cord Length	› 8 ft/ 2.44 m and 12 ft/ 3.66 m options
Power	› Up to 50kW
Supply Input	› 480 V AC 3ø, 52 kW › 120 V AC 1ø, 250 W
Output Voltage	› 50 V to 500 V DC
Electrical Output	› Up to 50 kW
Idle Power Consumption	› 60 W (Active Power)
Supply Frequency	› 60 Hz
IP Rating	› IP65, NEMA Type 3R
Efficiency	› >92%
Power Factor	› 0.99
Temperature	› -35°C to 50°C (-31°F to 122°F)
Network Connection	› 4G and Gigabit Ethernet
Authentication & Payment	› MIFARE ISO/IEC14443A/B, ISO/IEC15693,ISO/IEC18000-3, FeliCa, NFC, EMV 2.0 › Optional UPT (universal payment terminal) that supports VISA, AMEX, MasterCard and Apple Pay
Communication Protocol	› Open ADR certified. OCPP 1.6J
JuiceNet Enterprise Software	› Precision measurement of power, energy, voltage & current › Web-based portal: set payment rates and charging hours; monitor charging status and consumption data; control station access; load balancing › Driver app to monitor and pay for charging (iOS & Android) › Read more on JuiceNet Enterprise data sheet
Weight	› 363.76 lbs/ 165 kg
Electrical Protection	› Short circuit; Over voltage: RCD
Dimensions	› 2000(H) x 750(W) x 330(D) mm 78.74(H) x 29.53(W) x 13.00(D) in
Certifications	› CE, cUL, UL, CHAdeMO, RCM, FCC, IC, CALeVIP



JUICEBOX and JUICENET are registered trademarks of Enel X, an Enel Group company. Other product and company names mentioned herein may be trademarks or trade names of their respective owners.

*Certifications and registrations are anticipated and subject to change.

JuicePump 150 kW

Future-proof your EV infrastructure with a scalable DC fast charging station

The scalable JumpPump 150 kW delivers rapid fast charging in a modular design that meets EV infrastructure requirements today and in the future. With a range of configurations, JuicePump 150 offers a scalable solution that will evolve with EV models over the years, while minimizing upfront installation costs. Charge EVs up to 80% capacity in under 30 minutes.



Scalable Design

Offers a range of configuration options between 100 – 300 kW, so it will charge future EV models.



WiFi Connectivity

Choose between 4G/LTE, WiFi, or Ethernet connectivity options.



Rapid charging

Designed for high utilization customer, such as large fleets and highway rest stops.

Why JuicePump 150kW?

Faster Charging

Drivers can charge vehicles up to 80% within 30 minutes

Future-proof Infrastructure

Scalable design to accommodate all EV models over the years.

Flexible and easy installation

Save on CapEx with modular and scalable design.

Universal Compatibility

SA-J1772™ plug ensures compatibility with all EVs.*

Public Charging Network

Join a fast-growing network serving thousands of EV drivers.

Smart Charging Platform

Use the JuiceNet software platform to restrict station access and collect payment.

*Tesla requires CHAdeMO adapter, an easy and affordable add-on available from Enel X.

USER UNIT - Dispenser

Connectors	> Dual CHadeMO and CCS (Type 1)
Cord Length	> 10.5ft CHadeMo, 11.5ft - CCS1
Output current	> CCS 200A or up to 350A; CHAdEMO up to 200A
Output Voltage	> 50 V to 920 V DC
Electrical Output	> Up to 100kW, 150 kW, 200kW or 350kW depending on the power units configuration
IP/IK Rating	> IP54, NEMA Type 3R
Efficiency	> > 92% (combined)
Power Factor	> 0.99
Temperature	> -35°C to 50°C (-31°F to 122°F)
Altitude	> 6000 ft
RFID	> RFID supported with standards: MIFARE ISO/IEC14443A/B, ISO/IEC15693,ISO/IEC 18000-3, FeliCa, NFC, EMV 2.0
Payment	> Optional UPT (universal payment terminal) that supports VISA, AMEX, MasterCard,Apple Pay and Google Pay
JuiceNet Enterprise Software	<ul style="list-style-type: none"> > Precision measurement of power, energy, voltage & current > Web-based portal: set payment rates and charging hours; monitor charging status and consumption data; control station access; load balancing > Driver app: monitors and pays for charging (iOS & Android) > Read more on the JuiceNet Enterprise datasheet
Weight	> 600lbs / 277 kg
Electrical Protection	> Short circuit; Over voltage: RCD
Dimensions	> H: 97 in / 2464 mm x W: 22 in / 559 mm x D: 15 in / 381 mm
Certifications	> ETL (USA and Canada) for UL 2202, UL 2231, UL50E, NEC Article 625, CSA STD C22.2 No. 107.1,, CHAdEMO, FCC Class A
Electrical Protection	> Short circuit; Over voltage: RCD
Dimensions	> 2000(H) x 750(W) x 330(D) mm 78.74(H) x 29.53(W) x 13.00(D) in
Certifications	> CE, cUL, UL, CHAdEMO, RCM, FCC, IC, CALeVIP



JuicePump 175 kW

Serve more customers with one of the fastest DC fast charging stations available

The powerful JuicePump 175 kW is one of the fastest EV charging products on the market and will charge an EV's battery up to 80% capacity in under 20 minutes. This smart, networked DC fast charging station includes two charging ports that provide universal compatibility with all EVs and offers various payment options.



Rapid charging

Designed for high utilization customer, such as large fleets and highway rest stops.



State-of-the-art liquid cooling

Operates smoothly in all weather conditions.



Intuitive driver app

Drivers can access charging stations and manage charging sessions with a mobile app.

Why JuicePump 175kW?

Faster Charging

Drivers can charge vehicles up to 80% within 30 minutes

Eligible for Incentives

Qualifies for most utility and state incentive programs, which may cover between 50% to 100% of project costs.

Easy to Use and Install

Save on upfront costs with compact and lightweight DCFC.

Universal Compatibility

SA-J1772™ plug ensures compatibility with all EVs.*

Public Charging Network

Join a fast-growing network serving thousands of EV drivers.

Smart Charging Platform

Use the JuiceNet software platform to restrict station access and collect payment.

*Tesla requires CHAdeMO adapter, an easy and affordable add-on available from Enel X.

USER UNIT

Connectors	> Single CCS (Type 1); Dual CHAdEMO and CCS (Type 1)
Cord Length	> 13.5 ft
Output current	> CCS up to 350A; CHAdEMO up to 200A
Output Voltage	> 200 V to 920 V DC
Electrical Output	> Up to 175 kW
Supply Frequency	> 60 Hz
IP/IK Rating	> IP65, NEMA Type 3R;
Efficiency	> >98.5%
Power Factor	> 0.99
Temperature	> -35°C to 50°C (-31°F to 122°F)
RFID	> RFID supported with standards: MIFARE ISO/IEC14443A/B, ISO/IEC15693, ISO/IEC18000-3, FeliCa, NFC, EMV 2.0
Payment	> Optional UPT (universal payment terminal) that supports VISA, AMEX, MasterCard, Apple Pay and Google Pay.
JuiceNet Enterprise Software	<ul style="list-style-type: none"> > Precision measurement of power, energy, voltage & current > Web-based portal: set payment rates and charging hours; monitor charging status and consumption data; control station access; load balancing > Driver app to monitor and pay for charging (iOS & Android) > Read more on JuiceNet Enterprise datasheet
Weight	> 573 lbs/260 kg
Electrical Protection	> Short circuit; Over voltage: RCD
Dimensions	> H: 6.7 in / 2011 mm x W: 3.3 in / 993 mm x D: 1.9 in / 532 mm
Certifications	> cUL, UL, CHAdEMO, RCM, FCC, IC

