

LED Retrofit Lamps Approved for Hazardous Locations

A Smarter, Safer Switch From HID

AVAILABLE ONLY IN TYPE B



**RATED FOR CLASS 1,
DIVISION 2
A, B, C, D**

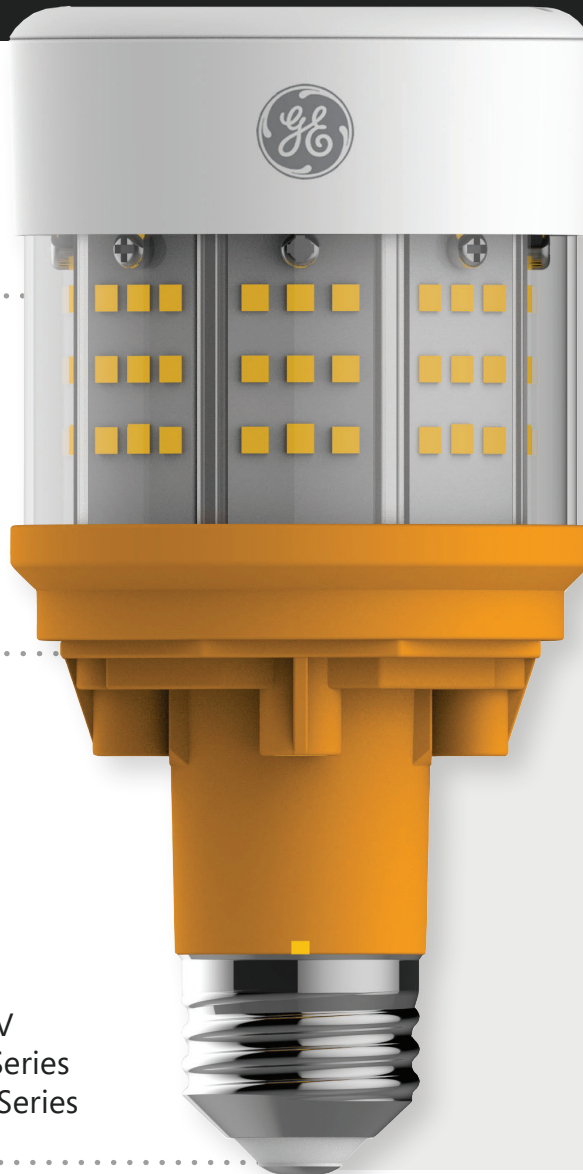


**INDUSTRY-LEADING
ANSI DESIGN**



**UL-CERTIFIED
FIXTURES**

GE Filtr-Gard™
Crouse-Hinds Champ® VMV
Appleton™ Mercmaster™ II Series
Appleton™ Mercmaster™ III Series



50,000-hour rated life
2.5x longer life than HID



50% less energy usage
with similar light output



E39 socket adapter
included for mogul
base applications



**High maximum
temperature ratings**
21W: 65°C | 35W: 55°C
45W: 45°C

Minimum starting
temperature: -20°C

**For use at drilling rigs, petrochemical facilities, food and beverage facilities
and other heavy-industry areas**

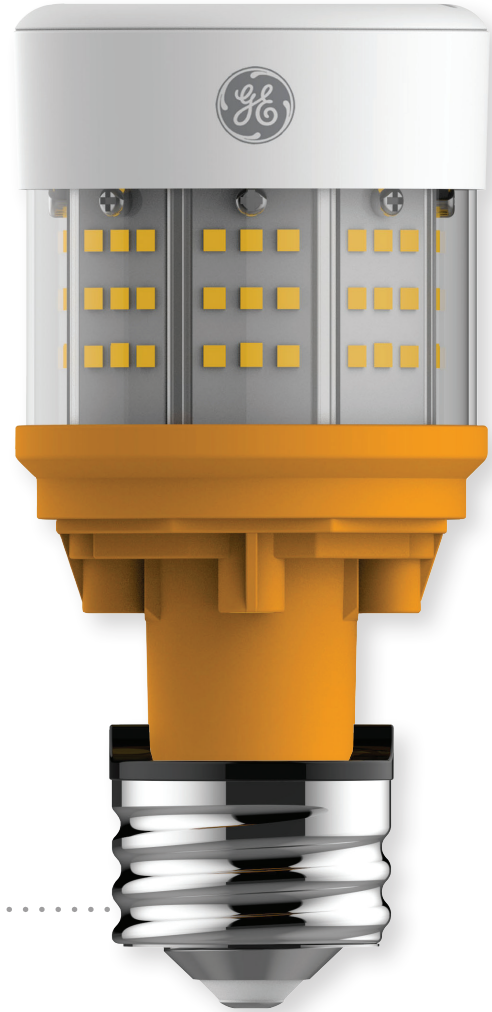
A Versatile Turn for the Better

LED retrofit lamps approved for hazardous locations from GE Current, a Daintree company, offer industry-leading light output, efficiency, versatility and durability in places where flammable vapors and gases are present. The quality and reliability of these lamps—including an E39 adapter with every purchase—set us apart from the competition.



EASY INSTALLATION

with the included E39 socket adapter



What's Considered a Hazardous Location?

Hazardous locations are defined in terms of Class, Division and Group, per the NEC.

The definition of each is as follows:

- **CLASS I** locations are those in which flammable gases or vapors are or may be present in the air in quantities sufficient to produce explosive or ignitable mixtures.
- **DIVISION 2** is an environment that is not normally hazardous. Each Division may be further classified according to the particular gas, vapor or dust by defining the areas by Groups. See table on the right.

CLASS I, DIVISION 2 HAZARDOUS ATMOSPHERE

| NEC Class | Division | Group | Typical Atmosphere and Autoignition Temperatures |
|-----------------------|--------------------------------|-------|---|
| I Gases, Vapors | 2 Not normally hazardous | A | Acetylene (305°C, 581°F) |
| | | B | Hydrogen (502°C, 986°F) manufactured gases containing more than 30% hydrogen (by volume) |
| | | C | Ethylene (450°C, 842°F) Cyclopropane (503°C, 938°F) |
| | | D | Hexane (225°C, 437°F) Butane (288°C, 550°F) Propane (450°C, 842°F) Acetone (465°C, 869°F) Benzene (420°C, 788°F) Gasoline (280–471°C, 536–880°F) |

Temperature Profiles

In the following temperature profile data chart, when a T code is used, the chart explains the temperature maximum (°C).

TEMPERATURE CODE


| | Identification Number | °C | Identification Number | °C |
|--|-----------------------|-----|-----------------------|-----|
| Maximum Temperature Range Identification Number | T1 | 450 | T3A | 180 |
| | T2 | 300 | T3B | 165 |
| | T2A | 280 | T3C | 160 |
| | T2B | 260 | T4 | 135 |
| | T2C | 230 | T4A | 120 |
| | T2D | 215 | T5 | 100 |
| | T3 | 200 | T6 | 85 |

APPROVED UL FIXTURES – TEMPERATURE PROFILE DATA

| UL Fixture | Lamp Wattage | Max. Ambient Temp. 40°C | Max. Ambient Temp. 55°C | Max. Ambient Temp. 65°C | Current LED Recommended Hazardous Replacement Wattage | LED Replacement Temperature Code |
|--|--------------|-------------------------|-------------------------|-------------------------|---|----------------------------------|
| Classifications: Class 1, Division 2 – Groups A, B, C, D | | | | | | |
| GE Filtr-Gard™ | 50 | T3A | T3 | T3 | 21 | T4A |
| GE Filtr-Gard™ | 70 | T3A | T3 | T3 | 35 | T4A |
| GE Filtr-Gard™ | 100 | T2B | T2C | T2C | 35/45 | T4A/T4 |
| GE Filtr-Gard™ | 150 | T2A | T2 | T2 | 45 | T4 |
| GE Filtr-Gard™ | 250 | N/A | N/A | N/A | 45 | T4 |
| Appleton™ Mercmaster™ II | 50 | T3 | N/A | N/A | 21 | T4A |
| Appleton™ Mercmaster™ II | 70 | T3 | N/A | N/A | 35 | T4A |
| Appleton™ Mercmaster™ II | 100 | T2C | N/A | N/A | 35/45 | T4A/T4 |
| Appleton™ Mercmaster™ II | 150 | T2A | N/A | N/A | 45 | T4 |
| Appleton™ Mercmaster™ II | 175 | T2B | N/A | N/A | 45 | T4 |
| Appleton™ Mercmaster™ III | 50 | T3B | T3A | T3 | 21 | T4A |
| Appleton™ Mercmaster™ III | 70 | T3A | T3A | T3A | 35 | T4A |
| Appleton™ Mercmaster™ III | 100 | T2D | T2D | T2D | 35/45 | T4A/T4 |
| Appleton™ Mercmaster™ III | 150 | T2B | T2A | N/A | 45 | T4 |
| Appleton™ Mercmaster™ III | 175 | T2B | T2A | T2 | 45 | T4 |
| Appleton™ Mercmaster™ III | 250 | T2 | T2 | N/A | 45 | T4 |
| Crouse-Hinds Champ® VMV | 50 | T3A | T3A | T3 | 21 | T4A |
| Crouse-Hinds Champ® VMV | 70 | T3 | T3 | N/A | 35 | T4A |
| Crouse-Hinds Champ® VMV | 100 | T2C | T2B | N/A | 35/45 | T4A/T4 |
| Crouse-Hinds Champ® VMV | 150 | T2A | T2 | N/A | 45 | T4 |
| Crouse-Hinds Champ® VMV | 250 | N/A | N/A | N/A | 45 | T4 |

Increased energy savings + lower heat profile = lower temperature code

LED HID TYPE B REPLACEMENT LAMPS

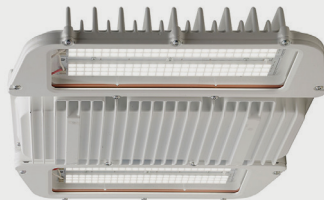
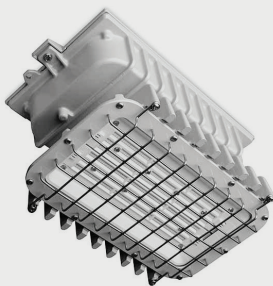
| Bulb Shape | Base Type | Watts | Order Code | Description | Volts | Case Qty. | MOL (in.) | Lumens Initial | Initial Color Temp. | CRI | Wattage Replacement | Rated Life L70 (hrs.) | Dimmable | DLC ^{***} | Location Rating | Additional Info |
|---|-----------|-------|------------|-------------------|---------|-----------|-----------|----------------|---------------------|-----|---------------------|-----------------------|----------|--------------------|-----------------|-------------------------|
| LED Replacement Lamps for HID | | | | | | | | | | | | | | | | |
|  | E26 | 21 | 93134832 | LED21ED17/730/HAZ | 120-277 | 3 | 5.4 | 3000 | 3000K | >70 | 50 | 50,000 | - | N/A | Damp | Ballast Bypass Required |
| | E26 | 21 | 93134833 | LED21ED17/740/HAZ | 120-277 | 3 | 5.4 | 3000 | 4000K | >70 | 50 | 50,000 | - | N/A | Damp | Ballast Bypass Required |
| | E26 | 21 | 93134834 | LED21ED17/750/HAZ | 120-277 | 3 | 5.4 | 3000 | 5000K | >70 | 50 | 50,000 | - | N/A | Damp | Ballast Bypass Required |
| | E26 | 35 | 93134829 | LED35ED17/730/HAZ | 120-277 | 3 | 5.4 | 5000 | 3000K | >70 | 70 | 50,000 | - | N/A | Damp | Ballast Bypass Required |
| | E26 | 35 | 93134830 | LED35ED17/740/HAZ | 120-277 | 3 | 5.4 | 5000 | 4000K | >70 | 70 | 50,000 | - | N/A | Damp | Ballast Bypass Required |
| | E26 | 35 | 93134831 | LED35ED17/750/HAZ | 120-277 | 3 | 5.4 | 5000 | 5000K | >70 | 70 | 50,000 | - | N/A | Damp | Ballast Bypass Required |
| | E26 | 45 | 93134846 | LED45ED17/730/HAZ | 120-277 | 3 | 5.4 | 6000 | 3000K | >70 | 100 | 50,000 | - | N/A | Damp | Ballast Bypass Required |
| | E26 | 45 | 93134847 | LED45ED17/740/HAZ | 120-277 | 3 | 5.4 | 6000 | 4000K | >70 | 100 | 50,000 | - | N/A | Damp | Ballast Bypass Required |
| | E26 | 45 | 93134848 | LED45ED17/750/HAZ | 120-277 | 3 | 5.4 | 6000 | 5000K | >70 | 100 | 50,000 | - | N/A | Damp | Ballast Bypass Required |

*E39 socket adapter is included for mogul base applications.
 **No DLC category for hazardous rated.

Current Offers a Complete Hazardous Portfolio Ranging From Fixtures to Lamps

ALBEO® HIGH BAY & LOW BAY LIGHTING

EVOLVE® HAZARDOUS LOCATION FLOODLIGHTS



To learn more about hazardous location lighting, visit products.gecurrent.com/hazardous-location-lighting.



© 2020 Current Lighting Solutions, LLC. All rights reserved. GE and the GE monogram are trademarks of the General Electric Company and are used under license. All other trademarks are the property of their respective owners. Information provided is subject to change without notice. All values are design or typical values when measured under laboratory conditions.